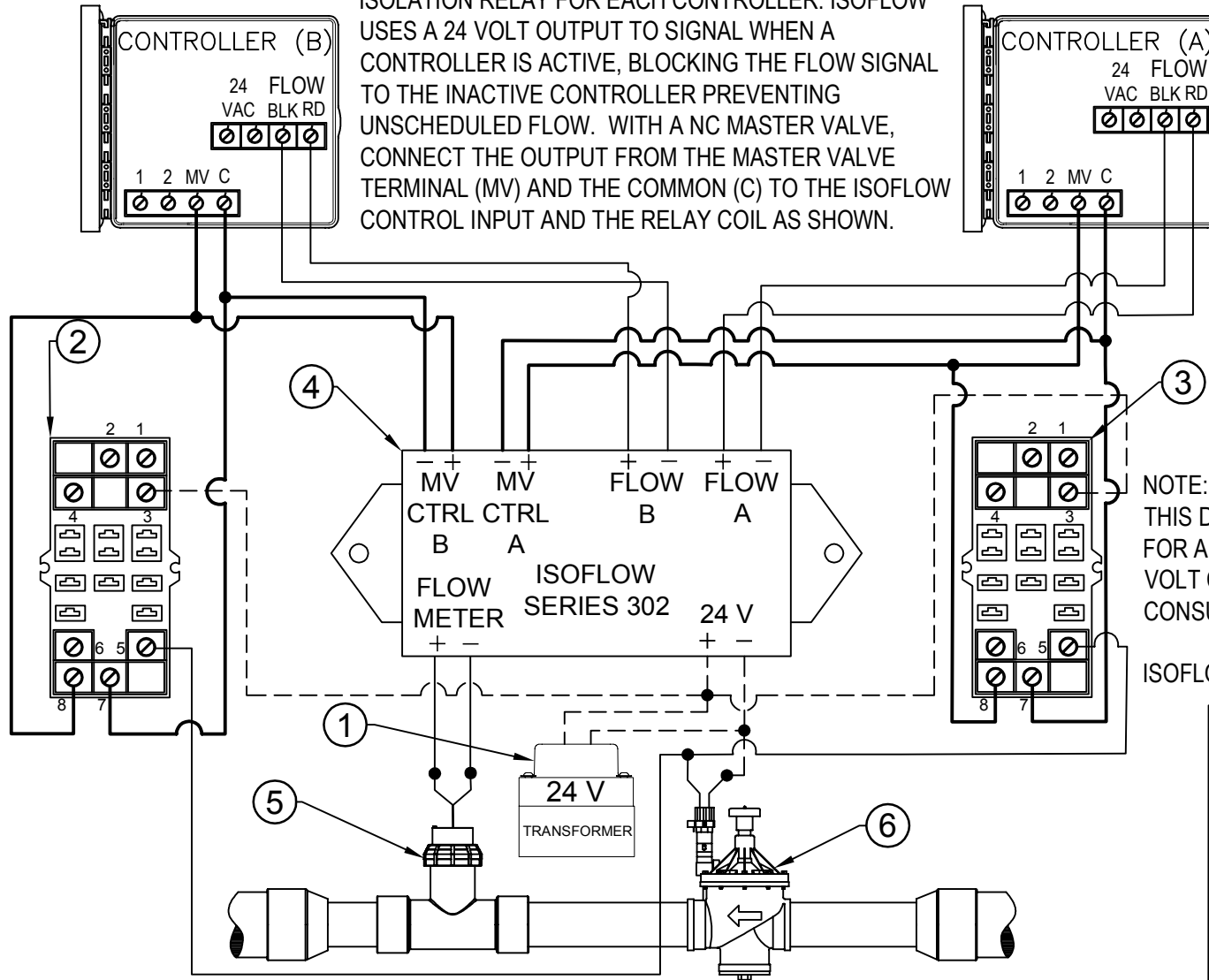


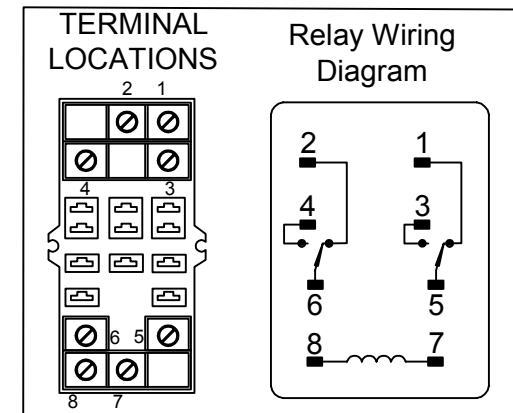
ISOFLOW DOES NOT ISOLATE MASTER VALVE, USE ISOLATION RELAY FOR EACH CONTROLLER. ISOFLOW USES A 24 VOLT OUTPUT TO SIGNAL WHEN A CONTROLLER IS ACTIVE, BLOCKING THE FLOW SIGNAL TO THE INACTIVE CONTROLLER PREVENTING UNSCHEDULED FLOW. WITH A NC MASTER VALVE, CONNECT THE OUTPUT FROM THE MASTER VALVE TERMINAL (MV) AND THE COMMON (C) TO THE ISOFLOW CONTROL INPUT AND THE RELAY COIL AS SHOWN.



- ① SECONDARY STEP DOWN TRANSFORMER 110V TO 24V POWER SUPPLY REQUIRED.
- ② ISOLATION RELAY #1
- ③ ISOLATION RELAY #2
- ④ ISOFLOW MODEL ISF-302
- ⑤ C.S.T. FLOW SENSOR
- ⑥ MASTER VALVE (NORMALLY CLOSED).

NOTE:  
 THIS DETAIL DEPICTS A RELAY SOCKET, PART NO. PTF08A-E FOR AN OMRON LY2F SERIES DPDT C FORM RELAY WITH 24 VOLT COIL. IF OTHER MANUFACTURER'S RELAYS ARE USED, CONSULT TERMINAL LAYOUT SUPPLIED WITH THE PRODUCT

ISOFLOW & MASTER VALVE CAN SHARE 24V POWER SUPPLY.



**1**

**ISOFLOW (N/C) MASTER VALVE ISOLATION RELAY**

N.T.S. NORMALLY CLOSED MASTER VALVE WITH ONE FLOW SENSOR AND TWO CONTROLLERS